



Transmission Planning and Certain Surprises

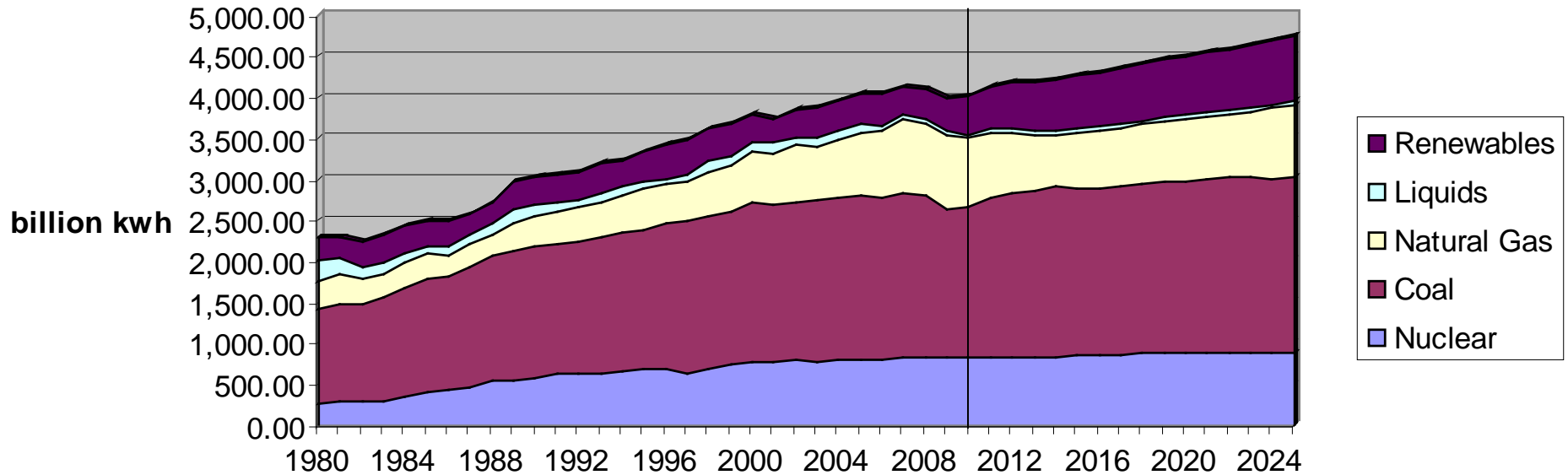
Lawrence Willick
Senior Vice President
LS Power Development, LLC
February 2010

Bringing Energy Forward

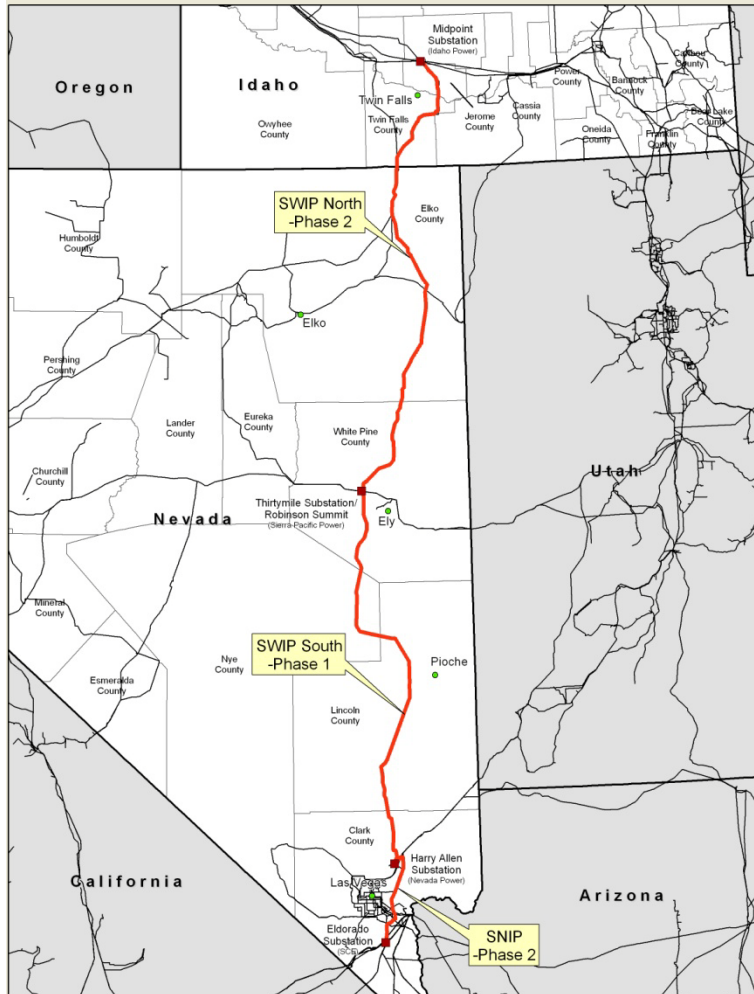


Generation Surprises

U.S. Electricity Generation by Fuel



Southwest Intertie Project (SWIP)



Project Description

- 570-mile long 500 kV line between southern Idaho and southern Nevada
- Phase 1: Harry Allen-Robinson Summit (SWIP North)
- Phase 2: Midpoint-Robinson Summit (SWIP South)
Harry Allen-EI Dorado (SNIP)
- ~ 2,000 MW of transfer capability

Benefits

- First connection between north and south Nevada
- Delivery of high capacity factor renewable generation
- Improves system reliability

Status

- Memorandum of Understanding with NV Energy
- Memorandum of Understanding with Western Area Power Administration
- Phase 1 Construction to begin in 2010
- Phase 2 Construction as early as 2011



Wyoming-Colorado Intertie Project

Project Description

- 180-mile 345 kV line between Wyoming and Colorado
- ~ 850 MW of transfer capability
- Public-Private Partnership

Benefits

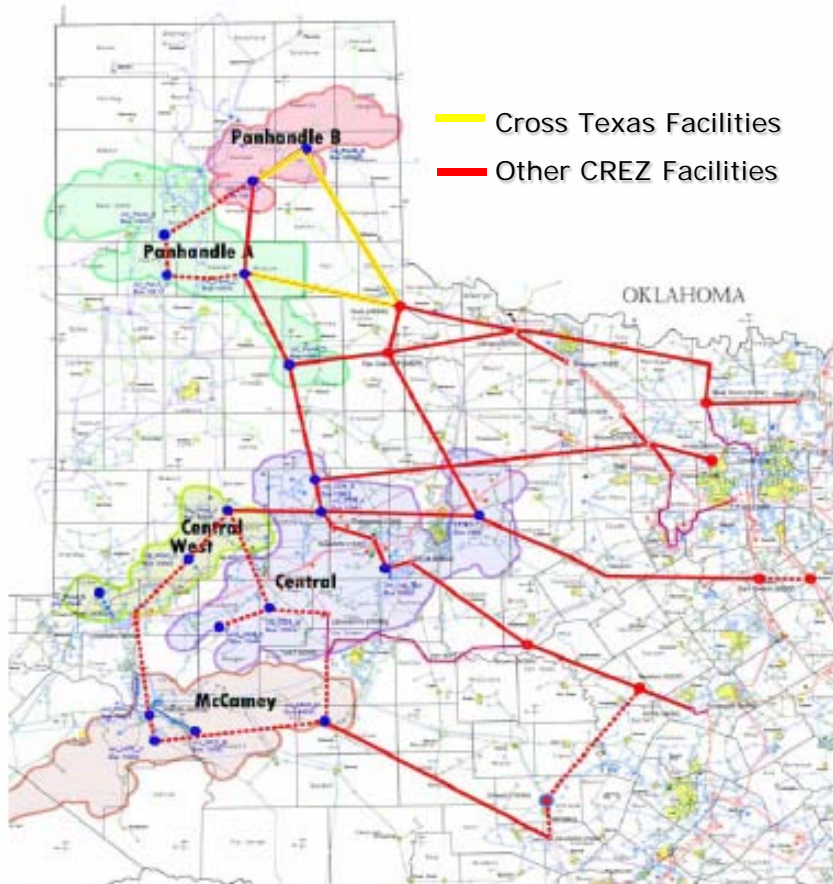
- Delivery of high-capacity factor wind

Status

- Joint Development Agreement with Wyoming Infrastructure Authority, April 2008
- LS Power acquired AES interest, April 2009
- Phase 2 of the WECC Path Rating process ongoing
- OATT, Market Based Rates Approved, May 2009
- Routing Studies Complete, May 2009
- Land and permitting plan formulated
- MOU with Western Area Power Administration, September 2009
- Ongoing customer inquiries



Cross Texas Transmission



Project Description

- Process administered by PUC of Texas
- Approved 2,300+ miles of new 345 kV transmission to deliver ~ 18,500 MW of renewable generation
- Selected Cross Texas Transmission to construct, operate and maintain 200+ miles of 2-345 kV transmission lines

Benefits

- Deliver renewable energy to customers in ERCOT from competitive renewable energy zones

Status

- Permitting and compliance filings 2010



No One Size Fits All

	Project description	Purpose	Planning	Permitting	Cost Recovery
Cross Texas Transmission	200+ miles double circuit 345 kV	Delivery of renewables within Texas – CREZ	Done	Future	Done
Great Basin Transmission (SWIP)	500+ miles single circuit 500 kV	Delivery of renewables, energy, capacity	Done	Done	Future
Wyoming-Colorado Intertie	180 miles single circuit 345 kV	Delivery of high-capacity factor wind	Done	Future	Future

